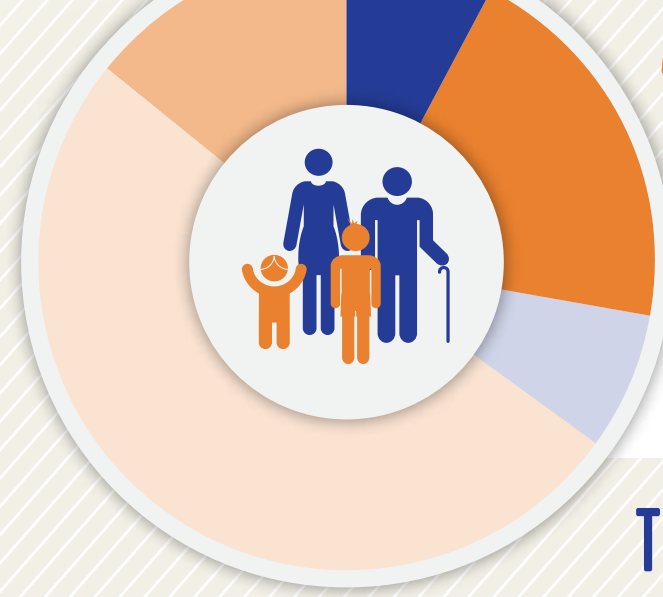




## EDUCATION & COMMUNITY PROFILE

### PIKE COUNTY



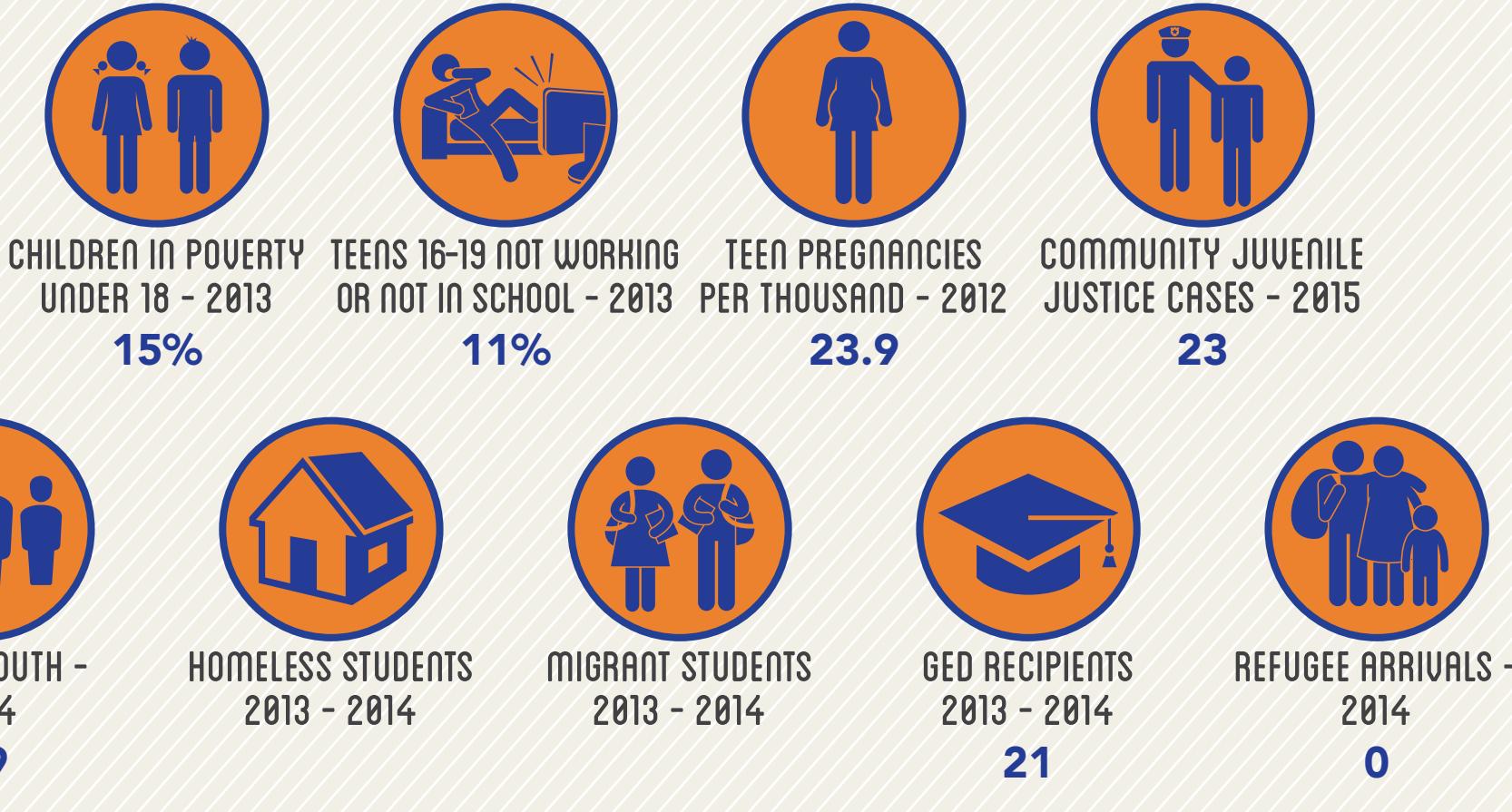
#### POPULATION BY AGE<sup>1</sup>

2013-2014

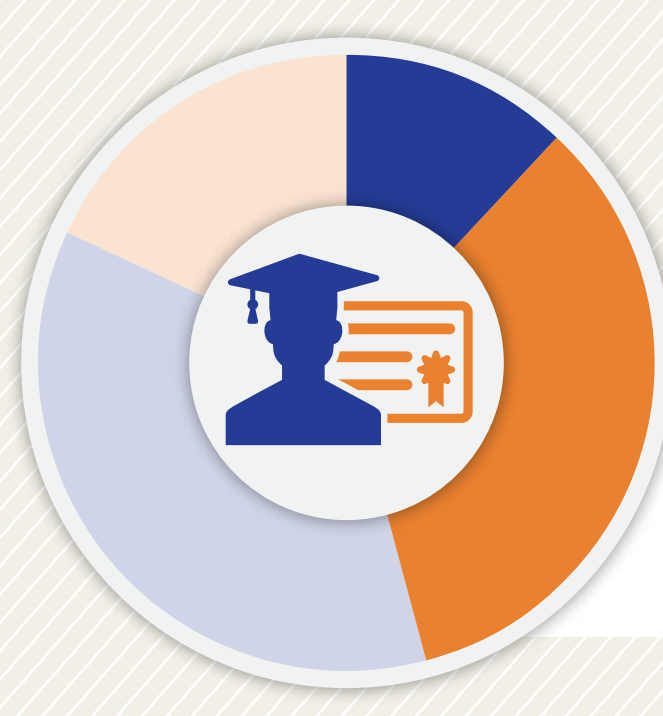
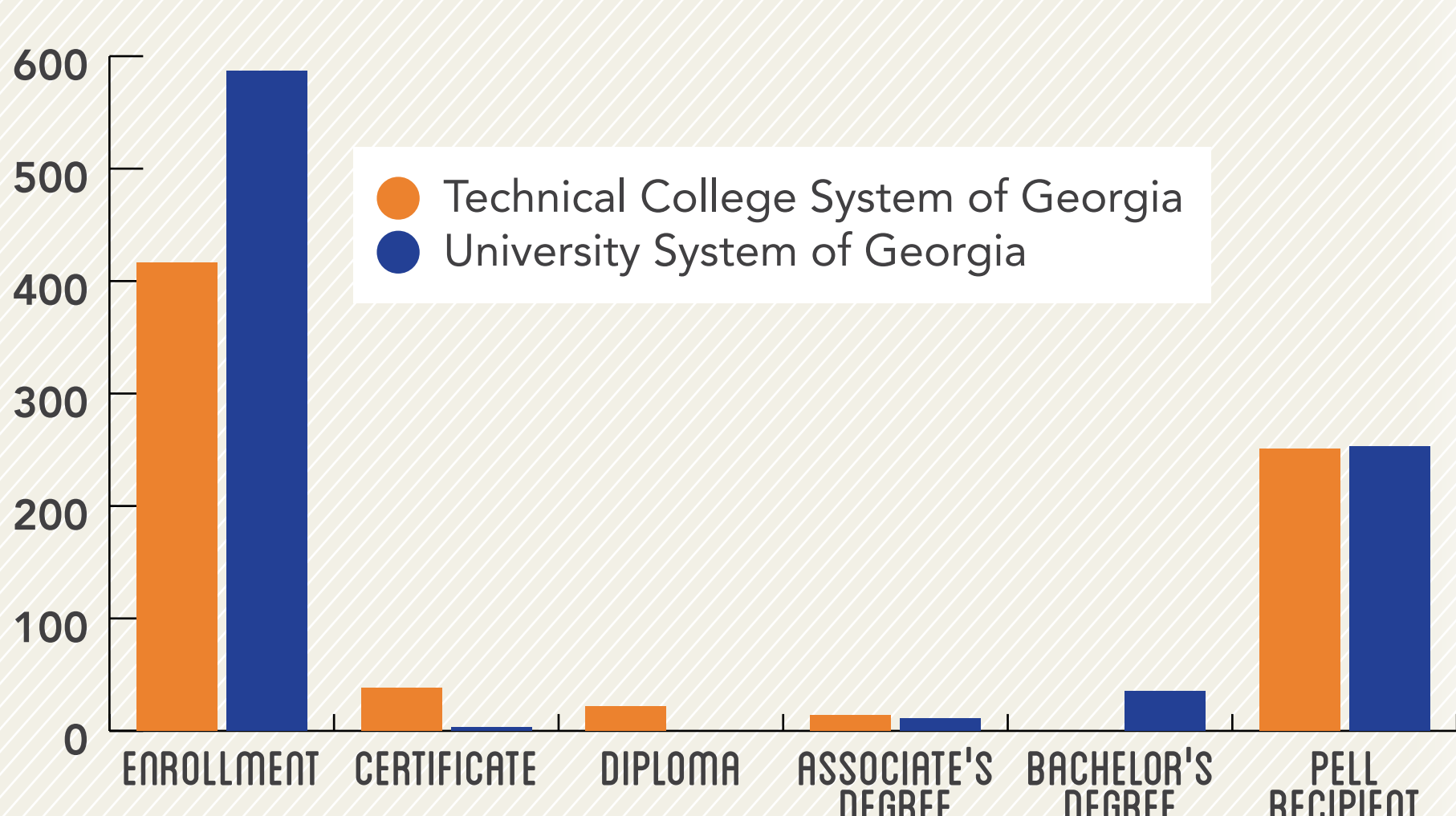
- 5% Under Age 5
- 5% Age 20-24
- 13% Age 65 & Above
- 24% Age 5-19
- 53% Age 25-64

TOTAL POPULATION: 17,807

#### VULNERABLE POPULATIONS<sup>1-8</sup>



#### POST-SECONDARY ENROLLMENT AND ATTAINMENT 2013-2014<sup>9</sup>



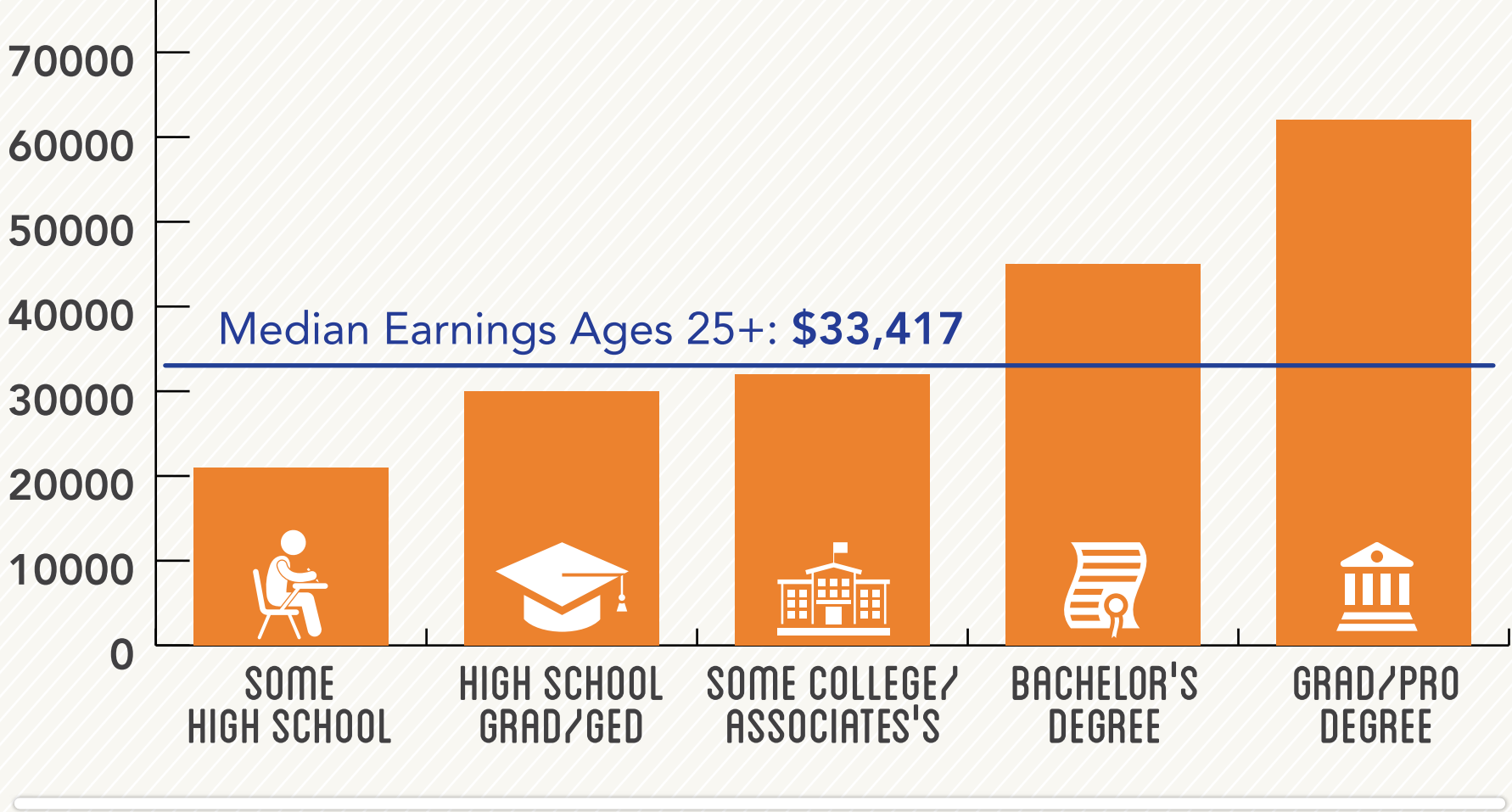
#### DEGREE ATTAINMENT<sup>1</sup>

Among Adults, 25-64, 2013-14

- 12% Some High School
- 34% High School Grad/GED
- 36% Some College/Associate's
- 18% Bachelor's Degree +

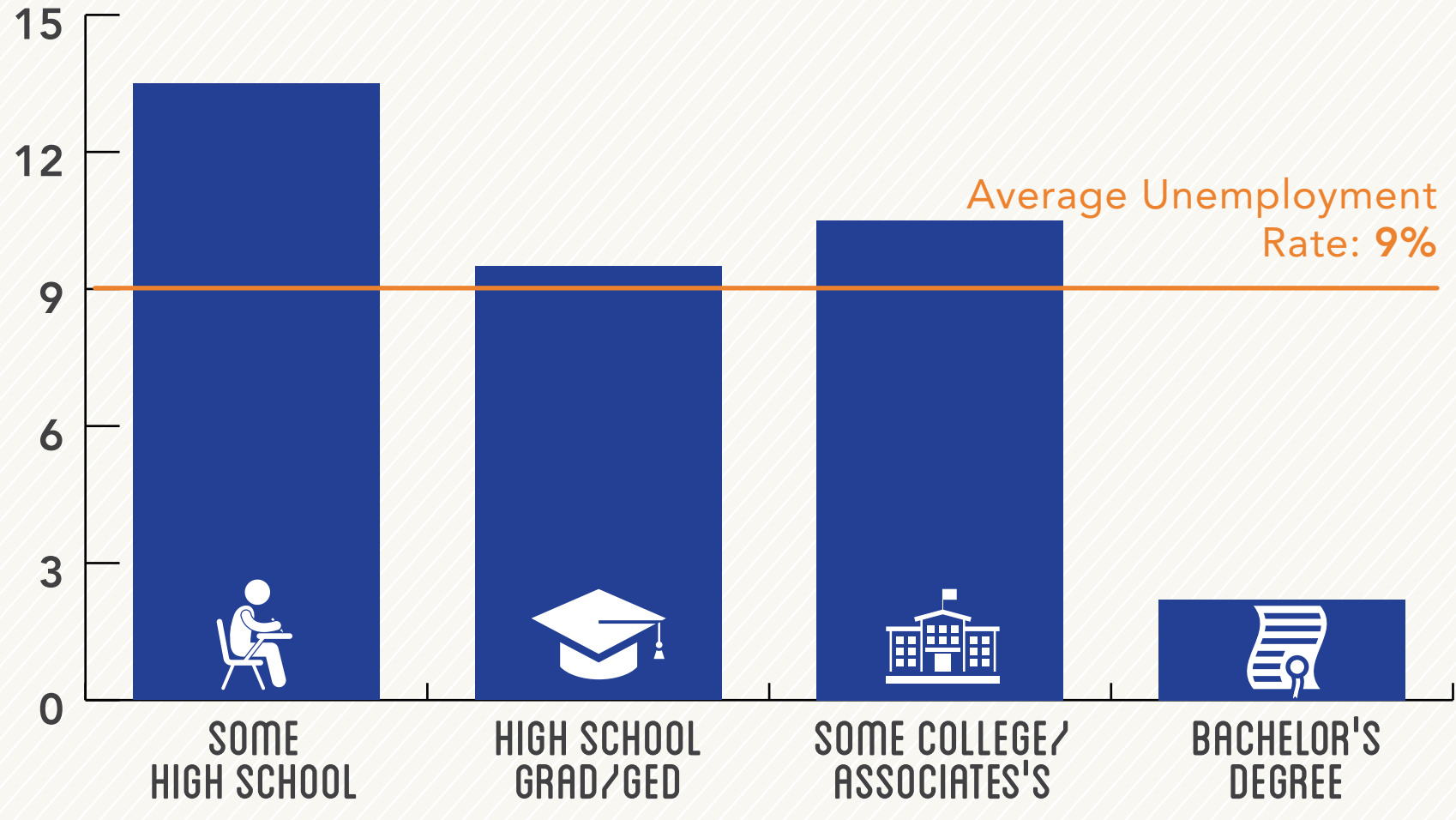
#### MEDIAN EARNINGS BY DEGREE ATTAINMENT<sup>1</sup>

Among Adults Ages 25-64, 2009-13



#### UNEMPLOYMENT BY DEGREE ATTAINMENT<sup>1</sup>

Among Adults Ages 25-64, 2009-13



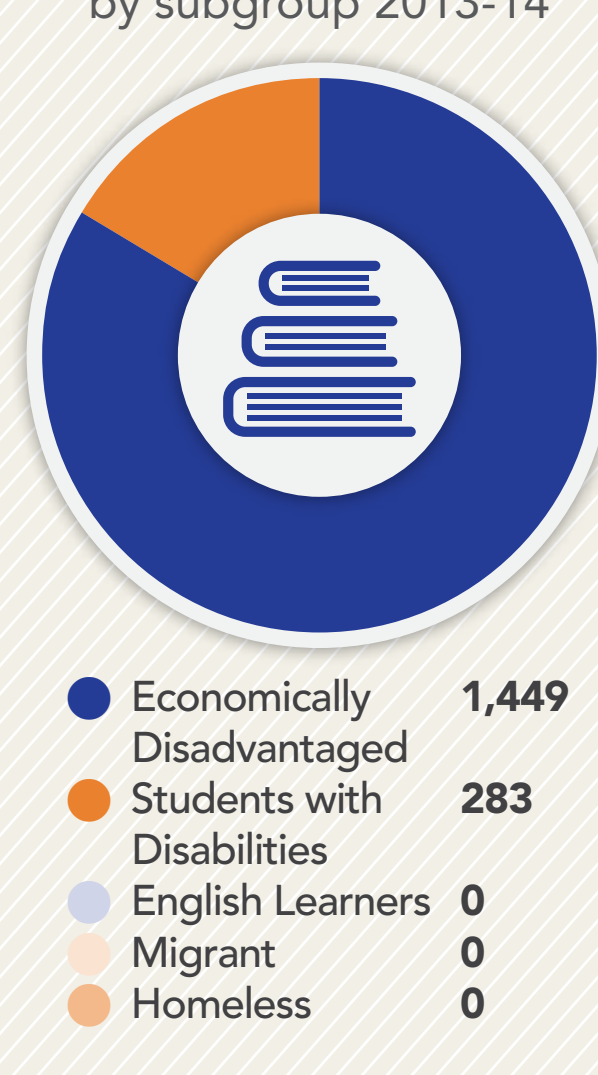
#### STUDENTS ENROLLED<sup>6</sup>

by school level 2013-14



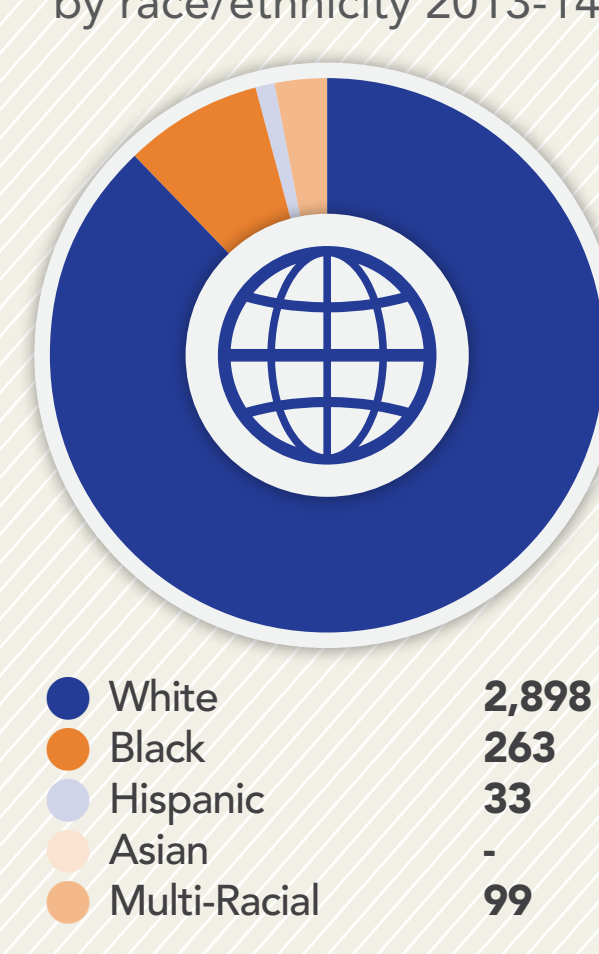
#### STUDENTS ENROLLED<sup>6</sup>

by subgroup 2013-14



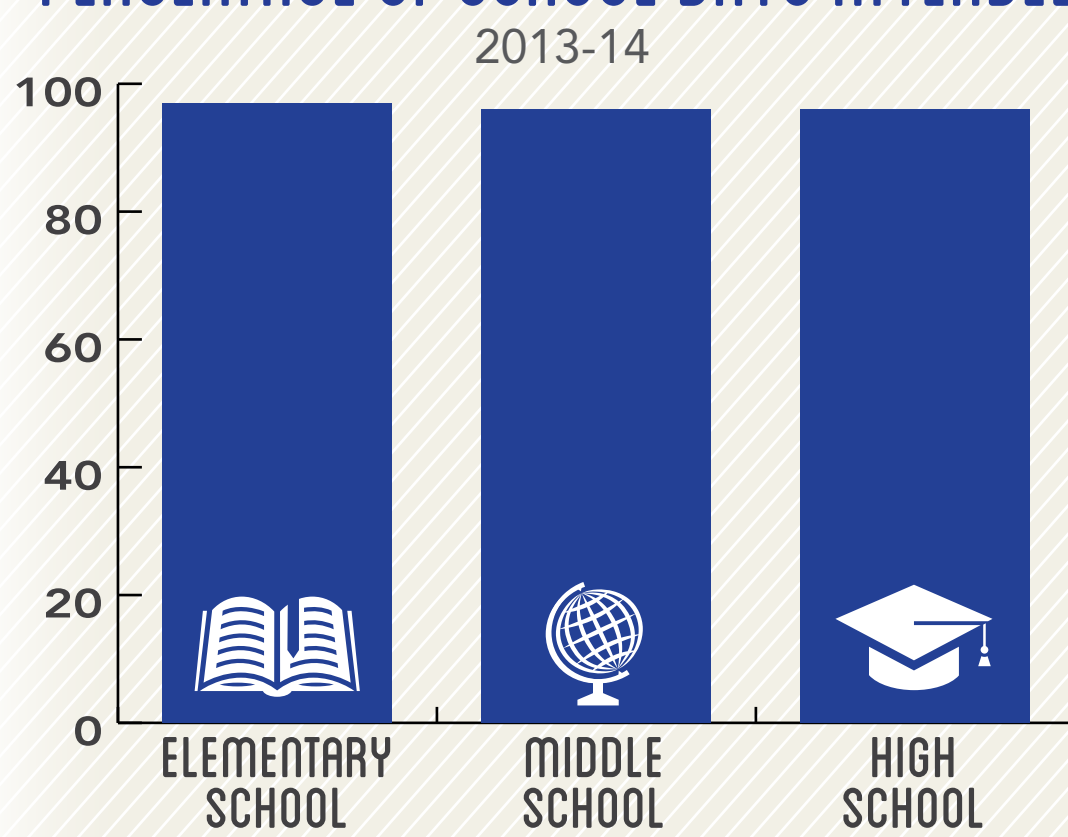
#### STUDENTS ENROLLED<sup>6</sup>

by race/ethnicity 2013-14



#### PERCENTAGE OF SCHOOL DAYS ATTENDED<sup>11</sup>

2013-14



#### POST-SECONDARY INDICATORS<sup>6</sup>

**79%** of high school grads enrolled in a U.S. institution within 16 months of high school graduation (2012)

**65%** of high school grads enrolled in Georgia post-secondary institution with one year of credit within two years of enrollment (2010)

#### POST-SECONDARY READINESS<sup>6, 11, 12</sup>

- 61%** Enrolled in accelerated courses (2014)
- 82%** Academically prepared for post-secondary (2014)
- 64%** Completed FAFSA (2013-2014)
- 46%** Eligible for HOPE scholarship (2013-2014)

#### SAT AVERAGE SCORES (2012-2013)

Reading 480

Math 472

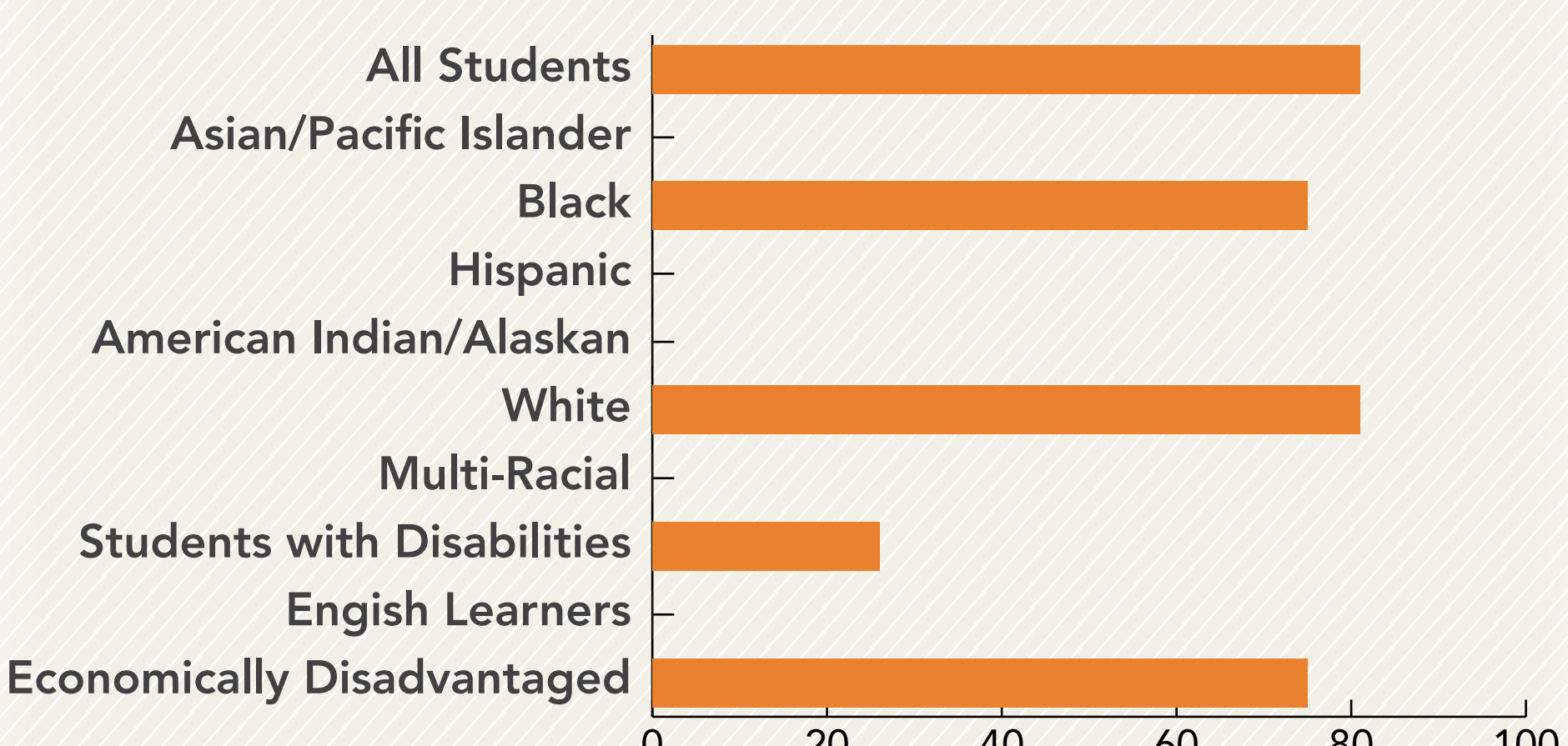
#### ACT AVERAGE SCORES (2013-2014)

English 18.5

Math 19.5

Science 20.2

#### 4-YEAR COHORT GRADUATION RATE BY SUBGROUP 2013-2014<sup>11</sup>



Sources: <sup>1</sup>American Community Survey 5-year estimates, 2009-2013; <sup>2</sup>Georgia Family Connection Partnership KIDS COUNT, 2012; <sup>3</sup>Georgia Department of Juvenile Justice, 2015; <sup>4</sup>State Child Welfare System of Georgia, 2014; <sup>5</sup>Georgia Department of Education, 2013-2014; <sup>6</sup>Governor's Office of Student Achievement Georgia State Report Card, 2013-2014; <sup>7</sup>Office of Adult Education GED Testing Program, 2013-2014; <sup>8</sup>Georgia Coalition of Refugee Stakeholders, 2013-2014; <sup>9</sup>Technical College System of Georgia, 2013-2014; <sup>10</sup>University System of Georgia, 2013-2014; <sup>11</sup>Georgia Department of Education - College and Career Ready Performance Index, 2013-2014; <sup>12</sup>Georgia Student Finance Commission, 2013-2014