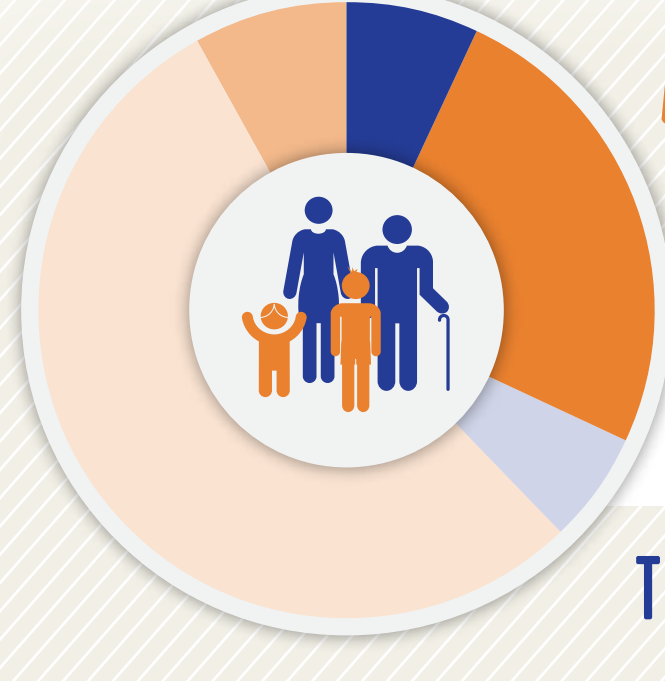




EDUCATION & COMMUNITY PROFILE

PAULDING COUNTY



POPULATION BY AGE¹

2013-2014

- 7% Under Age 5
- 6% Age 20-24
- 8% Age 65 & Above
- 25% Age 5-19
- 54% Age 25-64

TOTAL POPULATION: 143,845

VULNERABLE POPULATIONS¹⁻⁸



CHILDREN IN POVERTY UNDER 18 - 2013

14%



TEENS 16-19 NOT WORKING OR NOT IN SCHOOL - 2013

10%



TEEN PREGNANCIES PER THOUSAND - 2012

11.6



COMMUNITY JUVENILE JUSTICE CASES - 2015

182



FOSTER YOUTH - 2014

129



HOMELESS STUDENTS 2013 - 2014

0



MIGRANT STUDENTS 2013 - 2014

0



GED RECIPIENTS 2013 - 2014

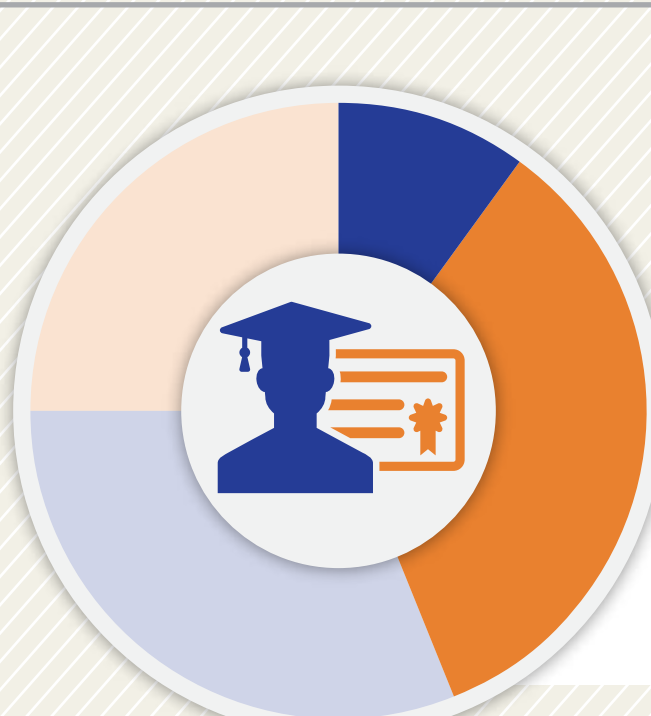
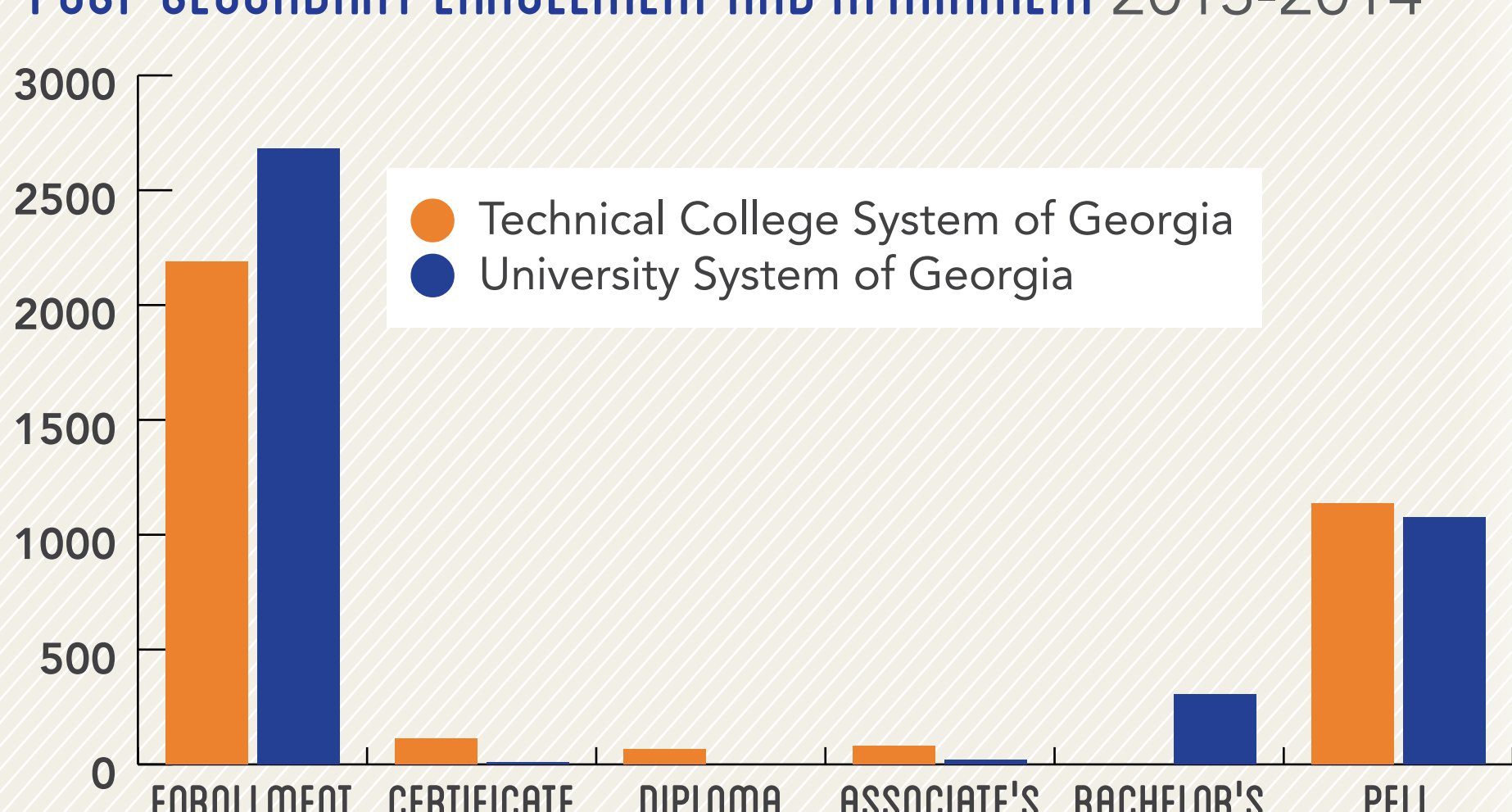
184



REFUGEE ARRIVALS - 2014

0

POST-SECONDARY ENROLLMENT AND ATTAINMENT 2013-2014⁹



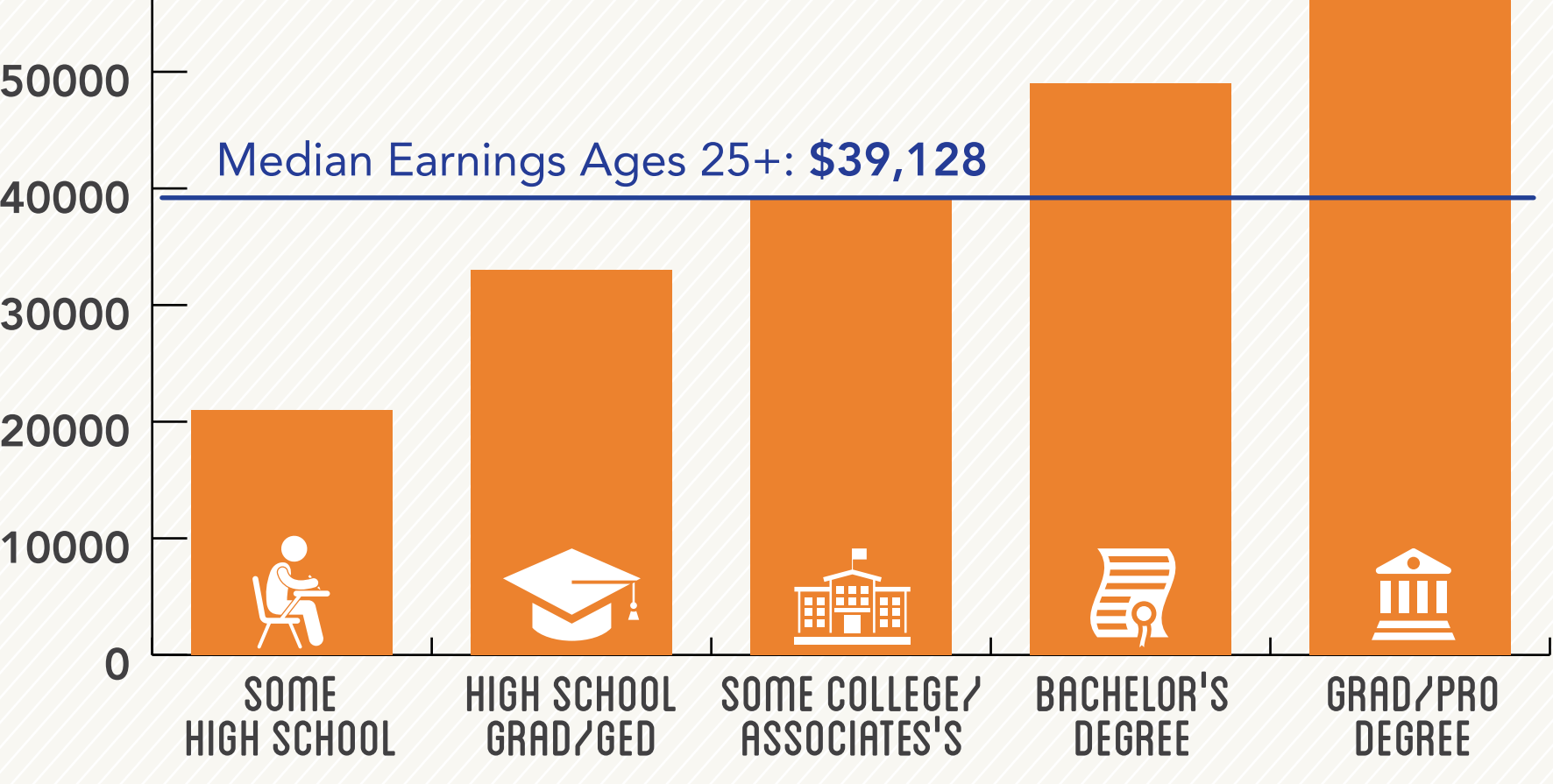
DEGREE ATTAINMENT¹

Among Adults, 25-64, 2013-14

- 10% Some High School
- 34% High School Grad/GED
- 31% Some College/Associate's
- 25% Bachelor's Degree +

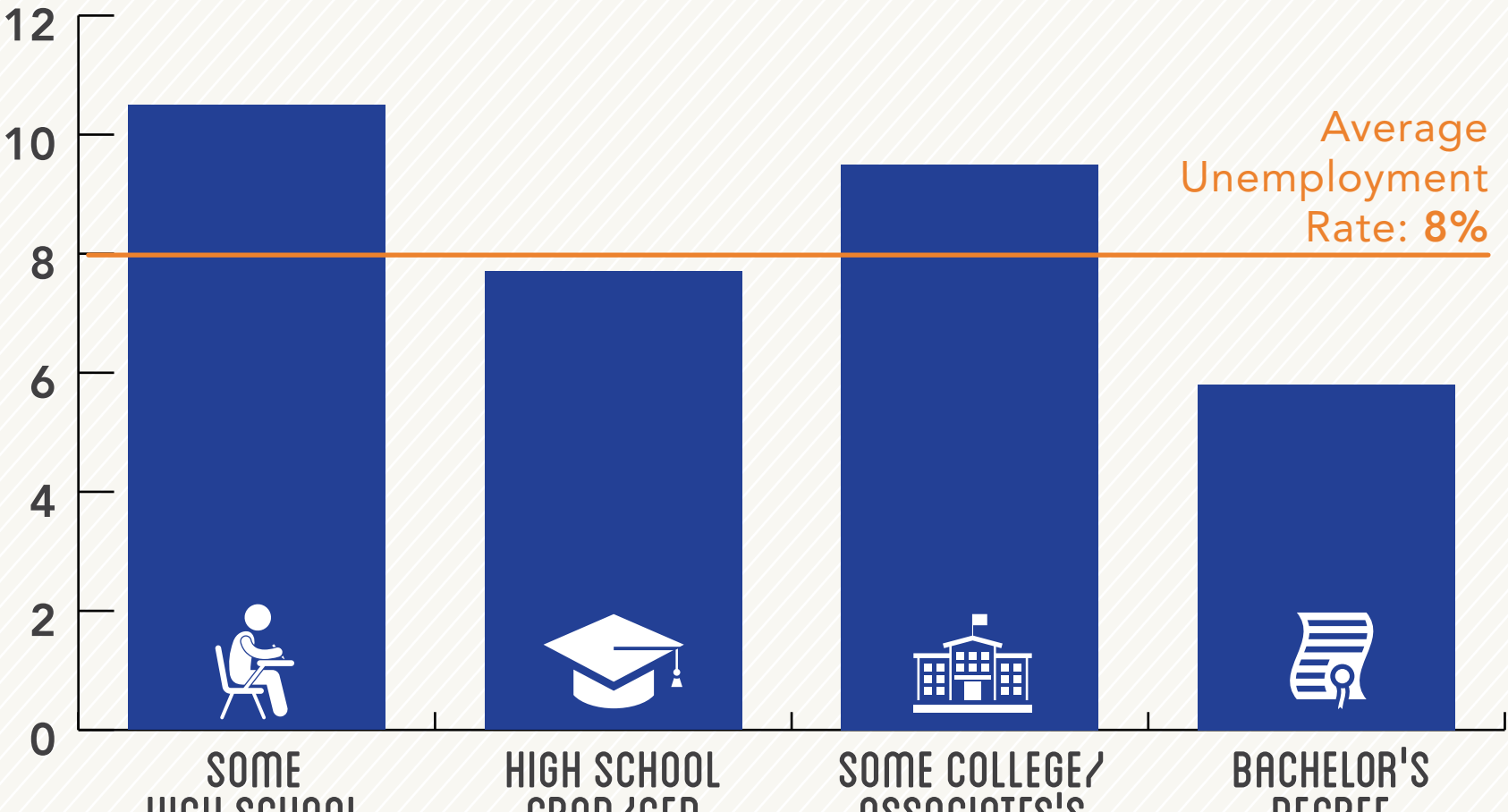
MEDIAN EARNINGS BY DEGREE ATTAINMENT¹

Among Adults Ages 25-64, 2009-13



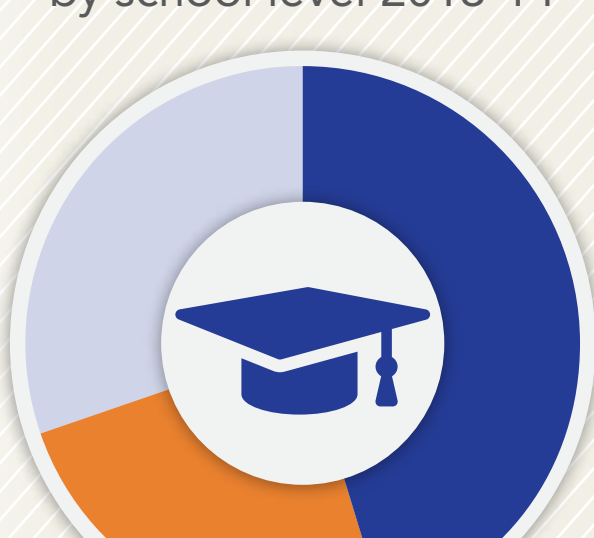
UNEMPLOYMENT BY DEGREE ATTAINMENT¹

Among Adults Ages 25-64, 2009-13



STUDENTS ENROLLED⁶

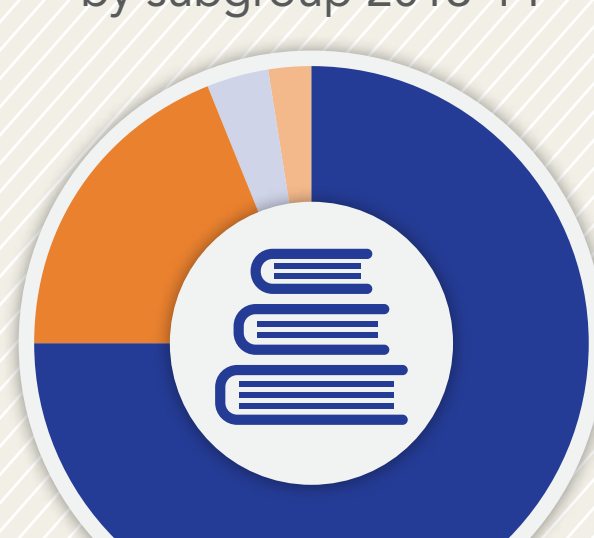
by school level 2013-14



- Elementary (PK-5) 12,822
- Middle (6-8) 6,815
- High School 8,527
- Total: 28,164

STUDENTS ENROLLED⁶

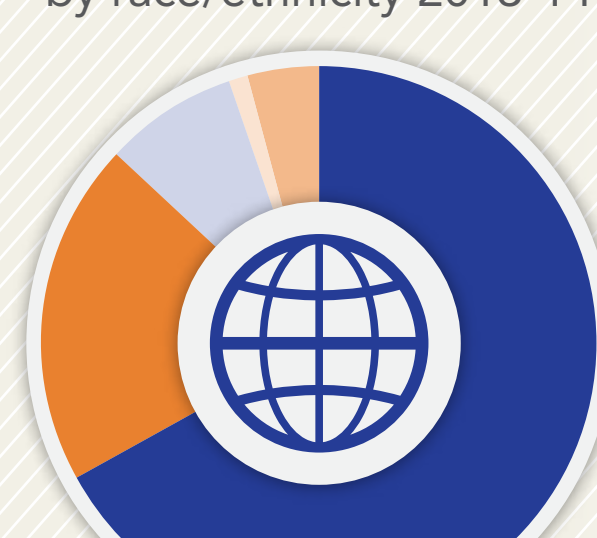
by subgroup 2013-14



- Economically Disadvantaged 12,111
- Students with Disabilities 3,070
- English Learners 563
- Migrant 0
- Homeless 400

STUDENTS ENROLLED⁶

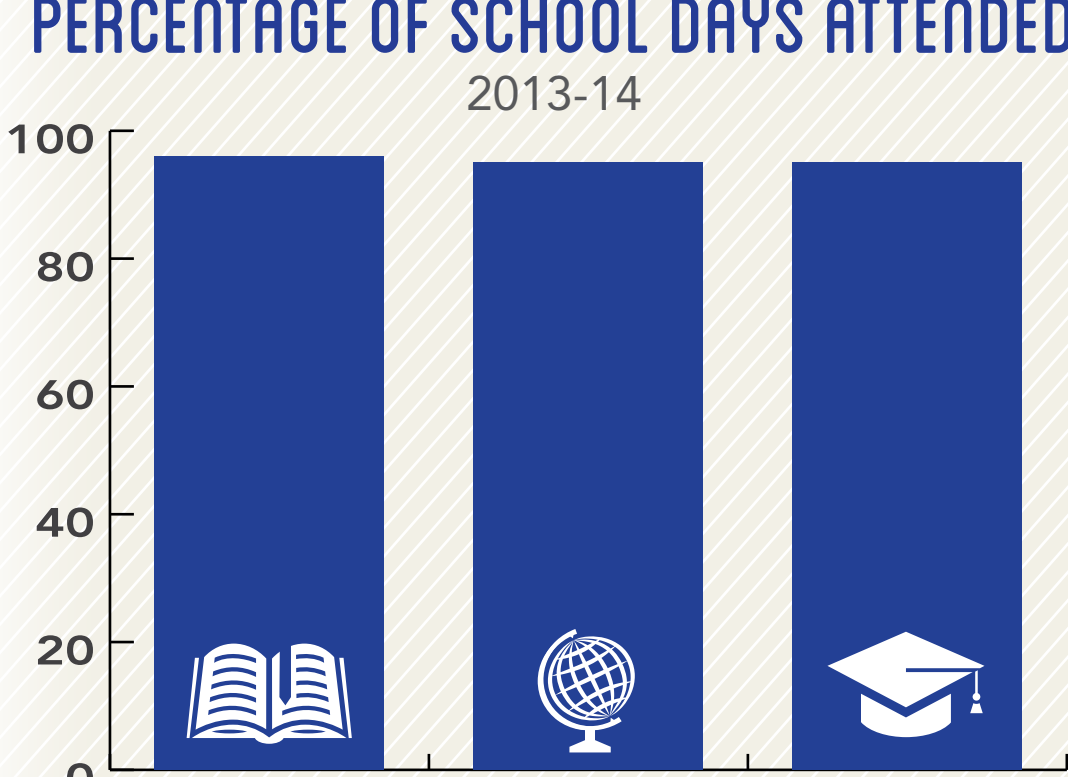
by race/ethnicity 2013-14



- White 18,870
- Black 5,633
- Hispanic 2,253
- Asian 282
- Multi-Racial 1,127

PERCENTAGE OF SCHOOL DAYS ATTENDED¹¹

2013-14



POST-SECONDARY INDICATORS⁶

68% of high school grads enrolled in a U.S. institution within 16 months of high school graduation (2012)

61% of high school grads enrolled in Georgia post-secondary institution with one year of credit within two years of enrollment (2010)

POST-SECONDARY READINESS^{6, 11, 12}

- 52% Enrolled in accelerated courses (2014)
- 68% Academically prepared for post-secondary (2014)
- 66% Completed FAFSA (2013-2014)
- 46% Eligible for HOPE scholarship (2013-2014)

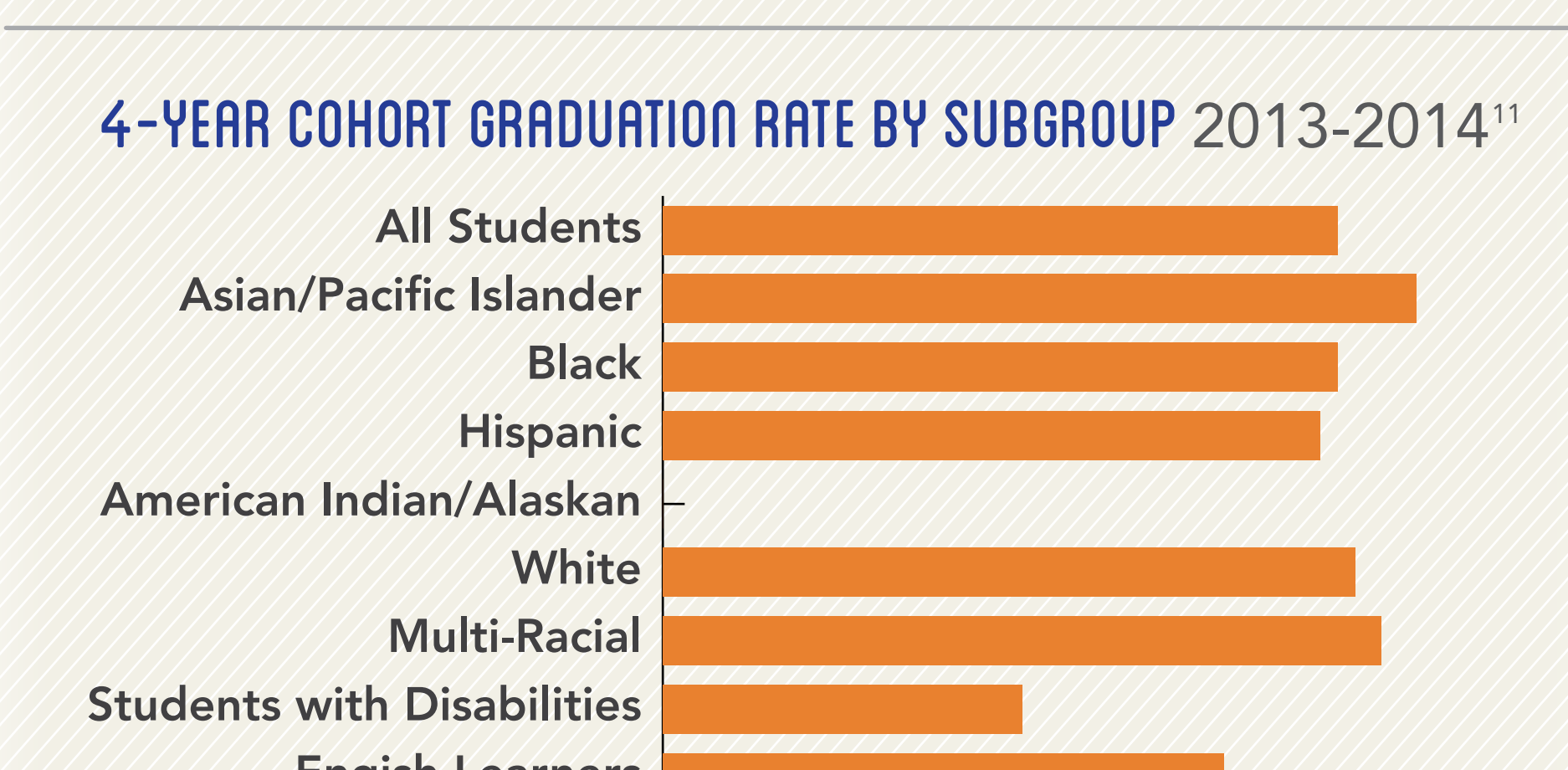
SAT AVERAGE SCORES (2012-2013)

Reading 469
Math 454

ACT AVERAGE SCORES (2013-2014)

English 18.1
Math 18.7
Science 19.3

4-YEAR COHORT GRADUATION RATE BY SUBGROUP 2013-2014¹¹



Sources: ¹American Community Survey 5-year estimates, 2009-2013; ²Georgia Family Connection Partnership KIDS COUNT, 2012; ³Georgia Department of Juvenile Justice, 2015; ⁴State Child Welfare System of Georgia, 2014; ⁵Georgia Department of Education, 2013-2014; ⁶Governor's Office of Student Achievement Georgia State Report Card, 2013-2014; ⁷Office of Adult Education GED Testing Program, 2013-2014; ⁸Georgia Coalition of Refugee Stakeholders, 2013-2014; ⁹Technical College System of Georgia, 2013-2014; ¹⁰University System of Georgia, 2013-2014; ¹¹Georgia Department of Education - College and Career Ready Performance Index, 2013-2014; ¹²Georgia Student Finance Commission, 2013-2014