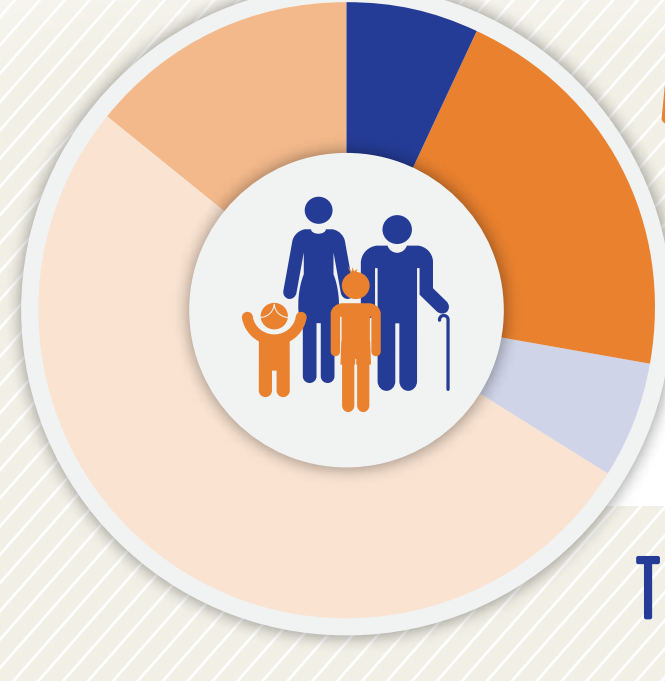




## EDUCATION & COMMUNITY PROFILE

### BERRIEN COUNTY



### POPULATION BY AGE<sup>1</sup>

2013-2014

- 7% Under Age 5
- 21% Age 5-19
- 6% Age 20-24
- 52% Age 25-64
- 14% Age 65 & Above

TOTAL POPULATION: 19,174

## VULNERABLE POPULATIONS<sup>1-8</sup>



CHILDREN IN POVERTY UNDER 18 - 2013  
34%



TEENS 16-19 NOT WORKING OR NOT IN SCHOOL - 2013  
11%



TEEN PREGNANCIES PER THOUSAND - 2012  
32.7



COMMUNITY JUVENILE JUSTICE CASES - 2015  
17



FOSTER YOUTH - 2014  
10



HOMELESS STUDENTS 2013 - 2014



MIGRANT STUDENTS 2013 - 2014

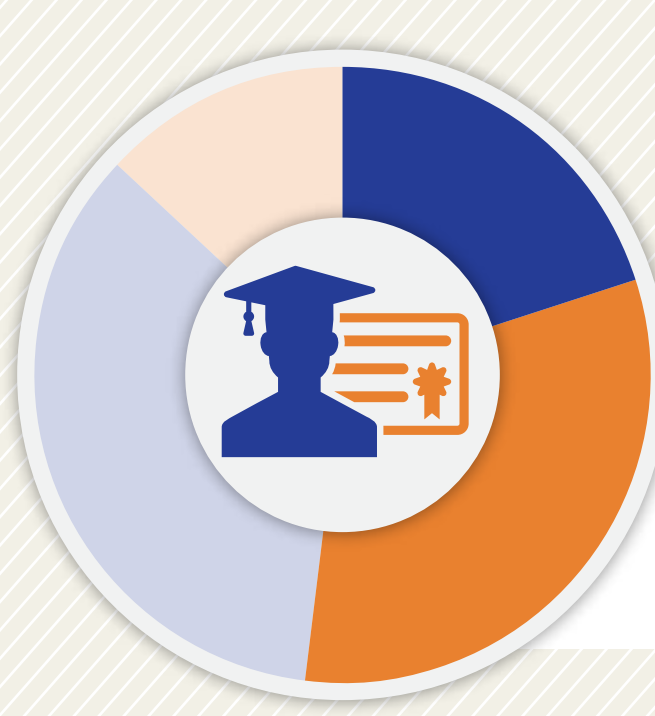
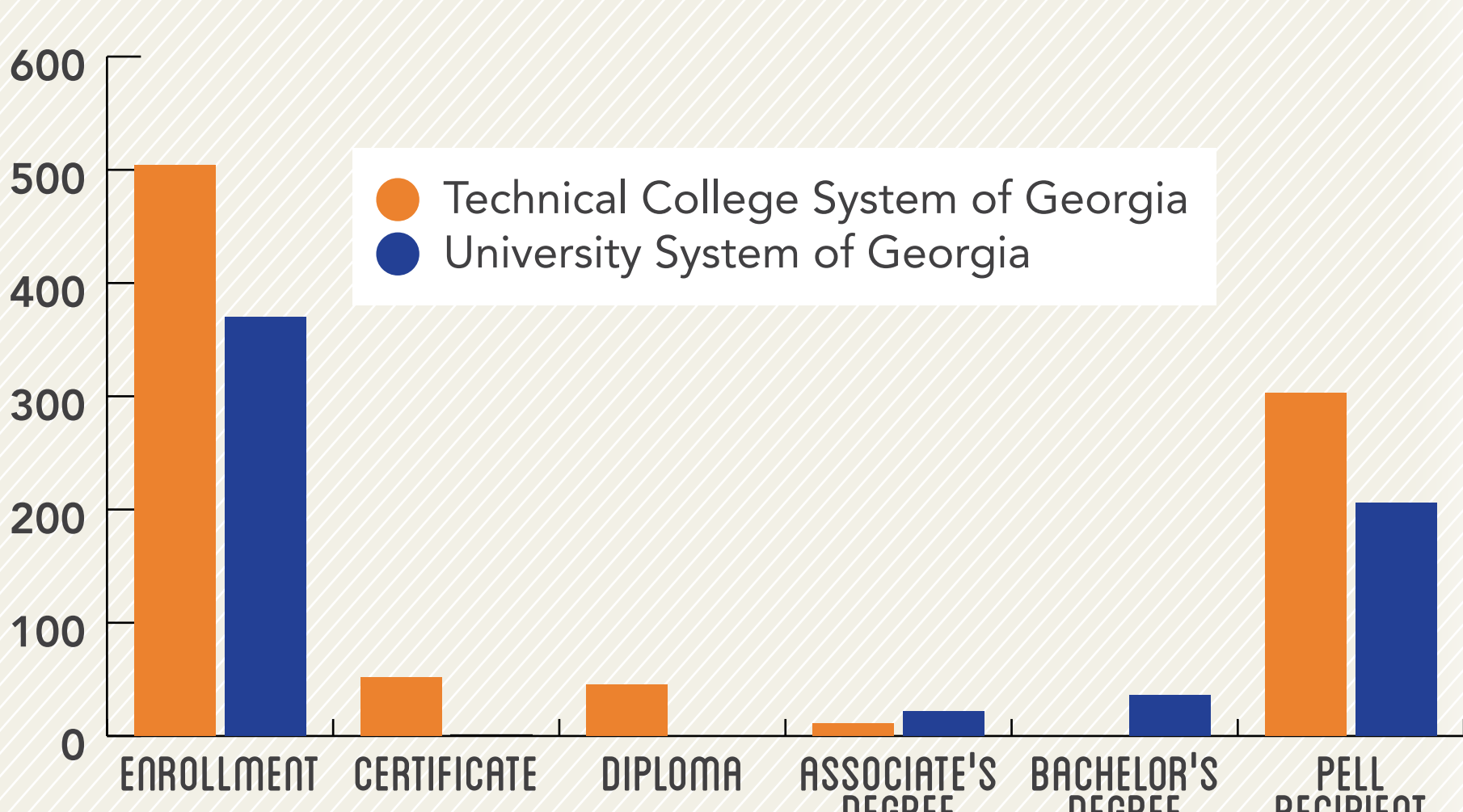


GED RECIPIENTS 2013 - 2014  
26



REFUGEE ARRIVALS - 2014  
0

## POST-SECONDARY ENROLLMENT AND ATTAINMENT 2013-2014<sup>9</sup>



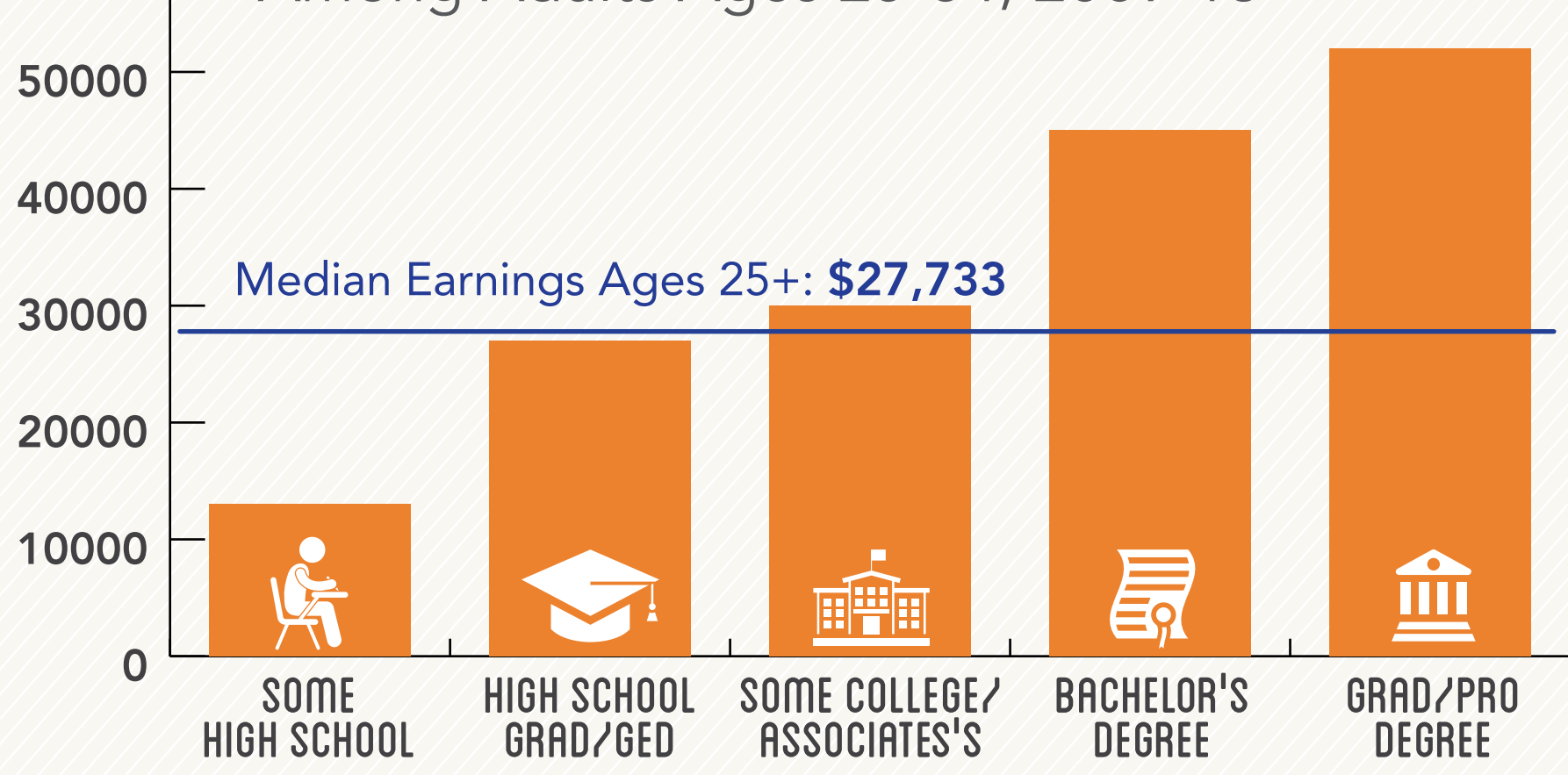
### DEGREE ATTAINMENT<sup>1</sup>

Among Adults, 25-64, 2013-14

- 20% Some High School
- 32% High School Grad/GED
- 35% Some College/Associate's
- 13% Bachelor's Degree +

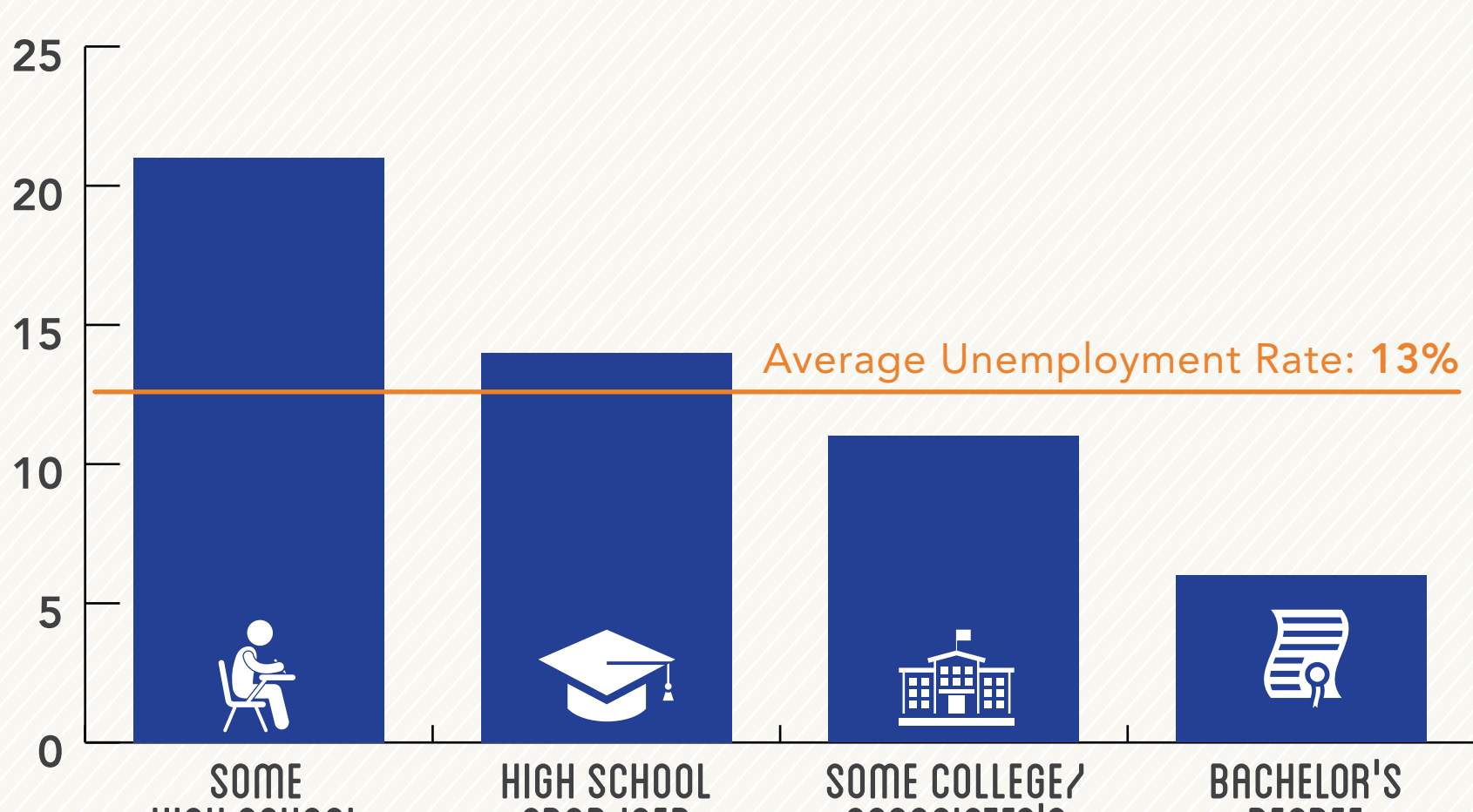
## MEDIAN EARNINGS BY DEGREE ATTAINMENT<sup>1</sup>

Among Adults Ages 25-64, 2009-13



## UNEMPLOYMENT BY DEGREE ATTAINMENT<sup>1</sup>

Among Adults Ages 25-64, 2009-13



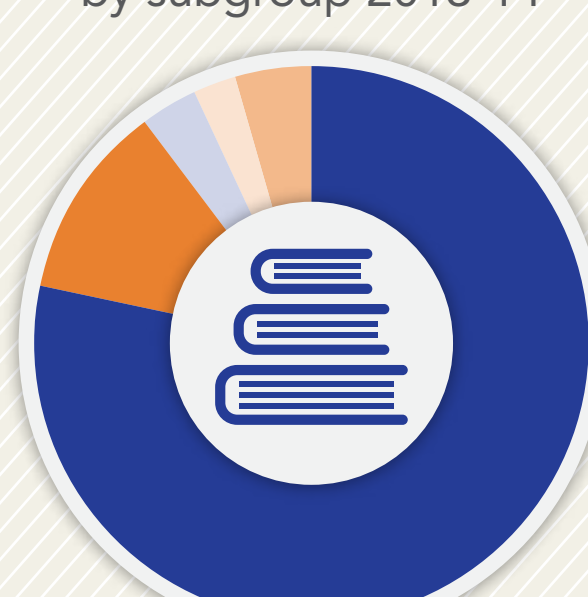
### STUDENTS ENROLLED<sup>6</sup>

by school level 2013-14



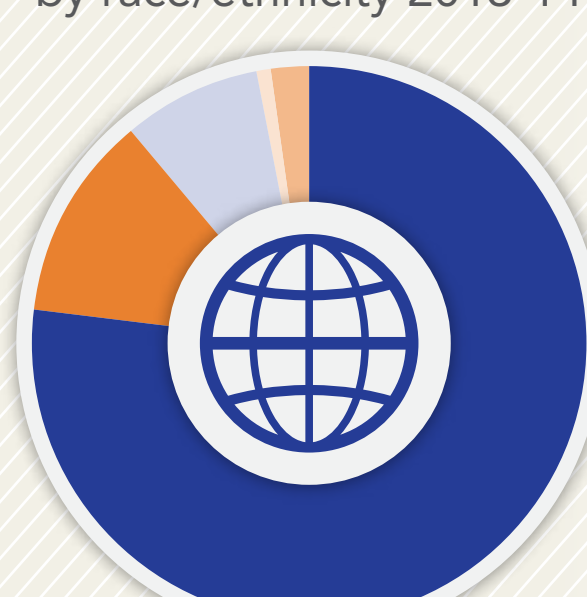
### STUDENTS ENROLLED<sup>6</sup>

by subgroup 2013-14



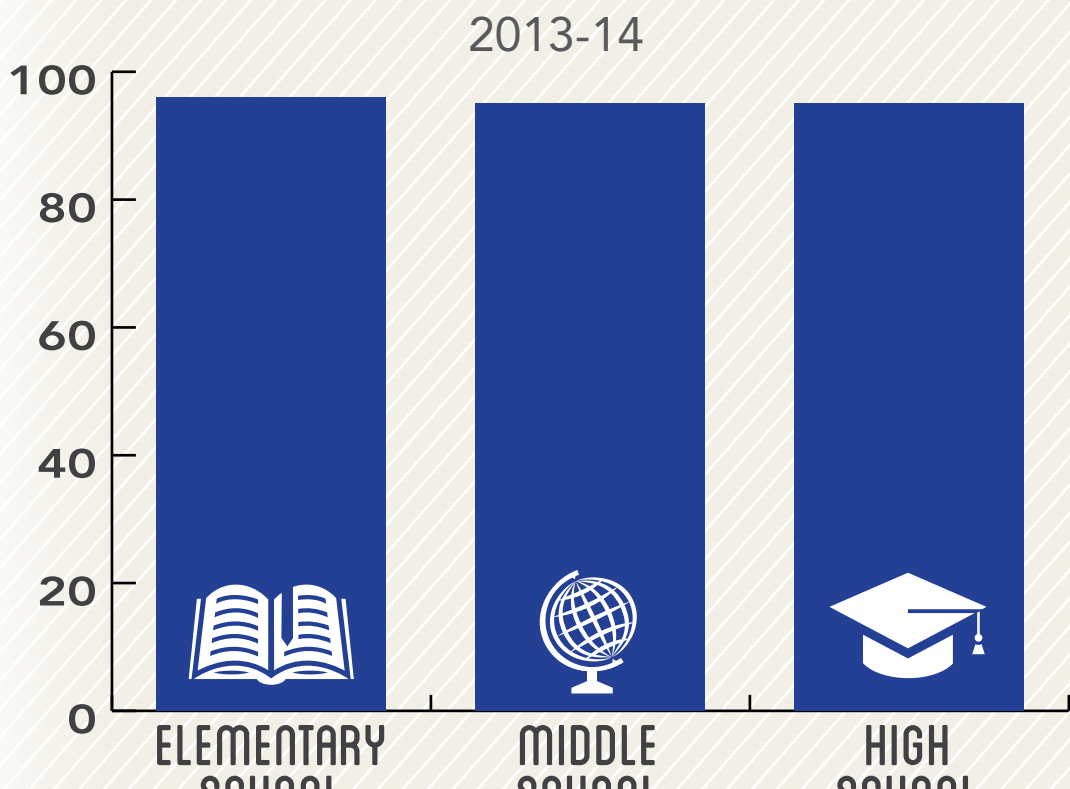
### STUDENTS ENROLLED<sup>6</sup>

by race/ethnicity 2013-14



## PERCENTAGE OF SCHOOL DAYS ATTENDED<sup>11</sup>

2013-14



## POST-SECONDARY INDICATORS<sup>6</sup>

**66%** of high school grads enrolled in a U.S. institution within 16 months of high school graduation (2012)

**56%** of high school grads enrolled in Georgia post-secondary institution with one year of credit within two years of enrollment (2010)

## POST-SECONDARY READINESS<sup>6, 11, 12</sup>

**69%** Enrolled in accelerated courses (2014)

**76%** Academically prepared for post-secondary (2014)

**65%** Completed FAFSA (2013-2014)

**48%** Eligible for HOPE scholarship (2013-2014)

### SAT AVERAGE SCORES (2012-2013)

Reading NA

Math NA

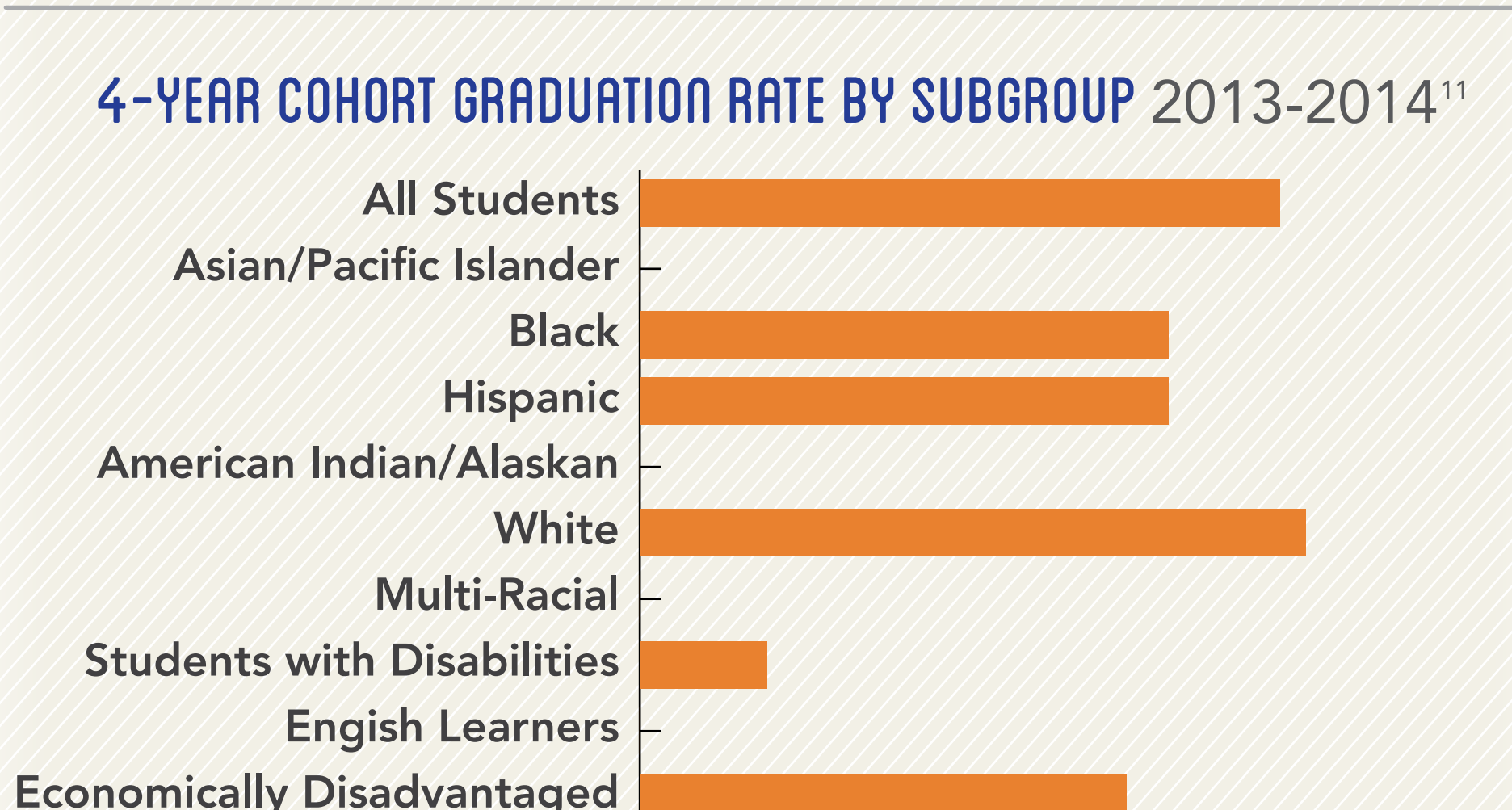
### ACT AVERAGE SCORES (2013-2014)

English NA

Math NA

Science NA

## 4-YEAR COHORT GRADUATION RATE BY SUBGROUP 2013-2014<sup>11</sup>



Sources: <sup>1</sup>American Community Survey 5-year estimates, 2009-2013; <sup>2</sup>Georgia Family Connection Partnership KIDS COUNT, 2012; <sup>3</sup>Georgia Department of Juvenile Justice, 2015; <sup>4</sup>State Child Welfare System of Georgia, 2014; <sup>5</sup>Georgia Department of Education, 2013-2014; <sup>6</sup>Governor's Office of Student Achievement Georgia State Report Card, 2013-2014; <sup>7</sup>Office of Adult Education GED Testing Program, 2013-2014; <sup>8</sup>Georgia Coalition of Refugee Stakeholders, 2013-2014; <sup>9</sup>Technical College System of Georgia, 2013-2014; <sup>10</sup>University System of Georgia, 2013-2014; <sup>11</sup>Georgia Department of Education - College and Career Ready Performance Index, 2013-2014; <sup>12</sup>Georgia Student Finance Commission, 2013-2014